

Adel Police Department Press Release

Submitted by: School Resource Officer Monte Keller

With the start of school just around the corner on August 23rd, Adel DeSoto Minburn School Resource Officer Monte Keller reminds both drivers and students to be cautious of one another when traveling to and from school. Officer Keller suggests to parents who have kids that walk to school, remind them of pedestrian safety such as using sidewalks, designated cross walks and the buddy system when walking to school with friends and siblings. Students riding bikes should observe and obey the traffic signs when traveling to and from school.

For those who drive, Keller advises to keep an extra eye out for students on bikes or on foot. A stop sign will be in place at 14th and Greene Street before and after school hours to keep traffic better controlled during those crucial times. Additionally the flashing yellow lights on Hwy 169 in front of the ADM High School serve as an additional warning to drivers to slow down to 35mph between the signs in this area. These lights are on before and after school when there is a higher flow of traffic.

Drivers need to be cautious when approaching the pedestrian crosswalk near the 600 block of Nile Kinnick Drive South. The ADM School District will have a crossing guard at this location before school from 7:45 a.m. until approximately 8:05 a.m. and after school from 3:35 p.m. until 3:45 p.m. to assist with students crossing Nile Kinnick Drive.

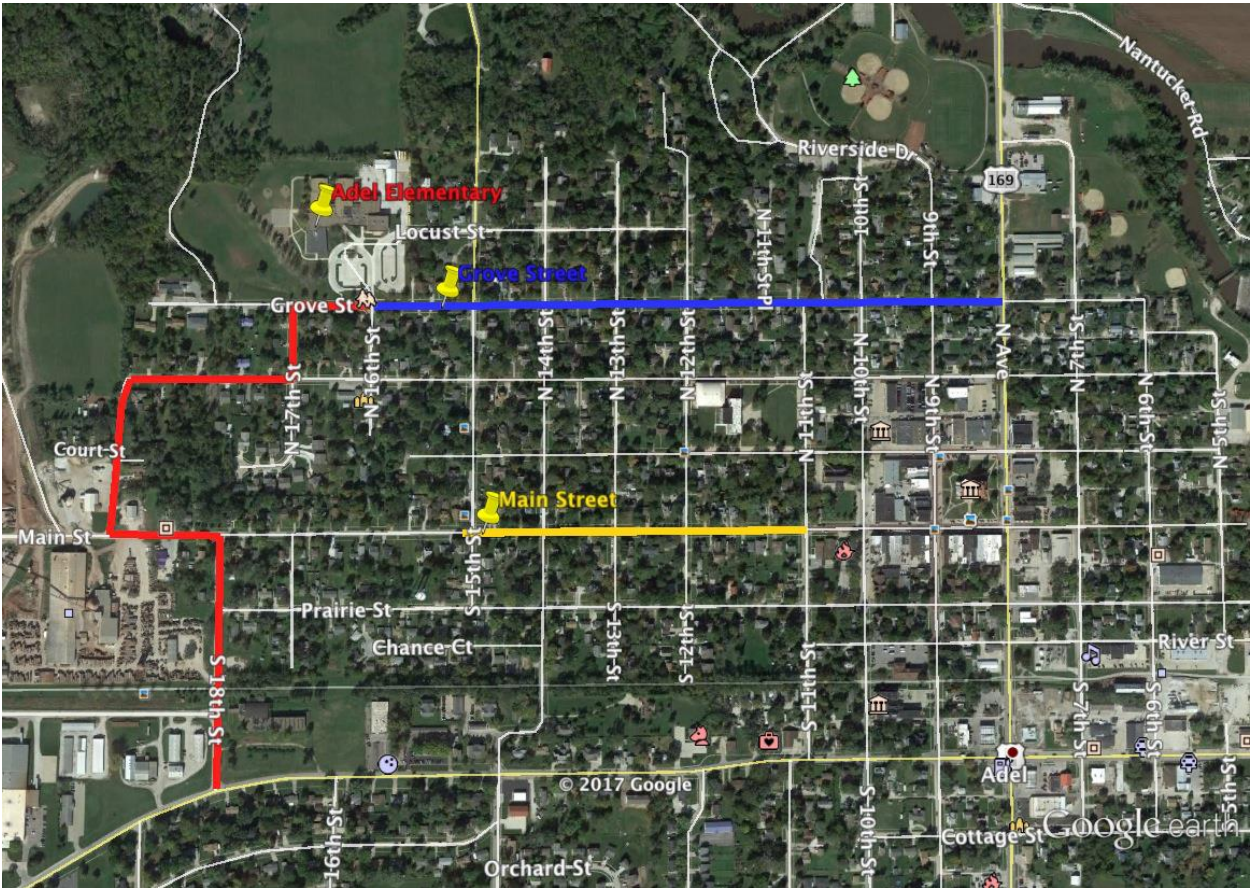
Stopping for School Buses

Officer Keller reminds drivers to be cautious around school buses who may be picking up or unloading students. When the red stop sign is extended on the bus and the red lights are flashing it is unlawful to pass the bus from either direction. The consequences for passing a school bus during the above conditions have changed as of August 15th, 2012. A court appearance is required for school bus violations. For a first offense the person is guilty of a simple misdemeanor punishable by a fine of at least \$250.00 but no more than \$675.00. The Iowa DOT will additionally impose a 30-day license suspension for the first offense. The Adel Police Department will be aggressively patrolling near the school zones to ensure that drivers are obeying these laws. For more information contact Officer Keller at (515) 993-6723.

Student pick up and drop off procedures

Adel Elementary

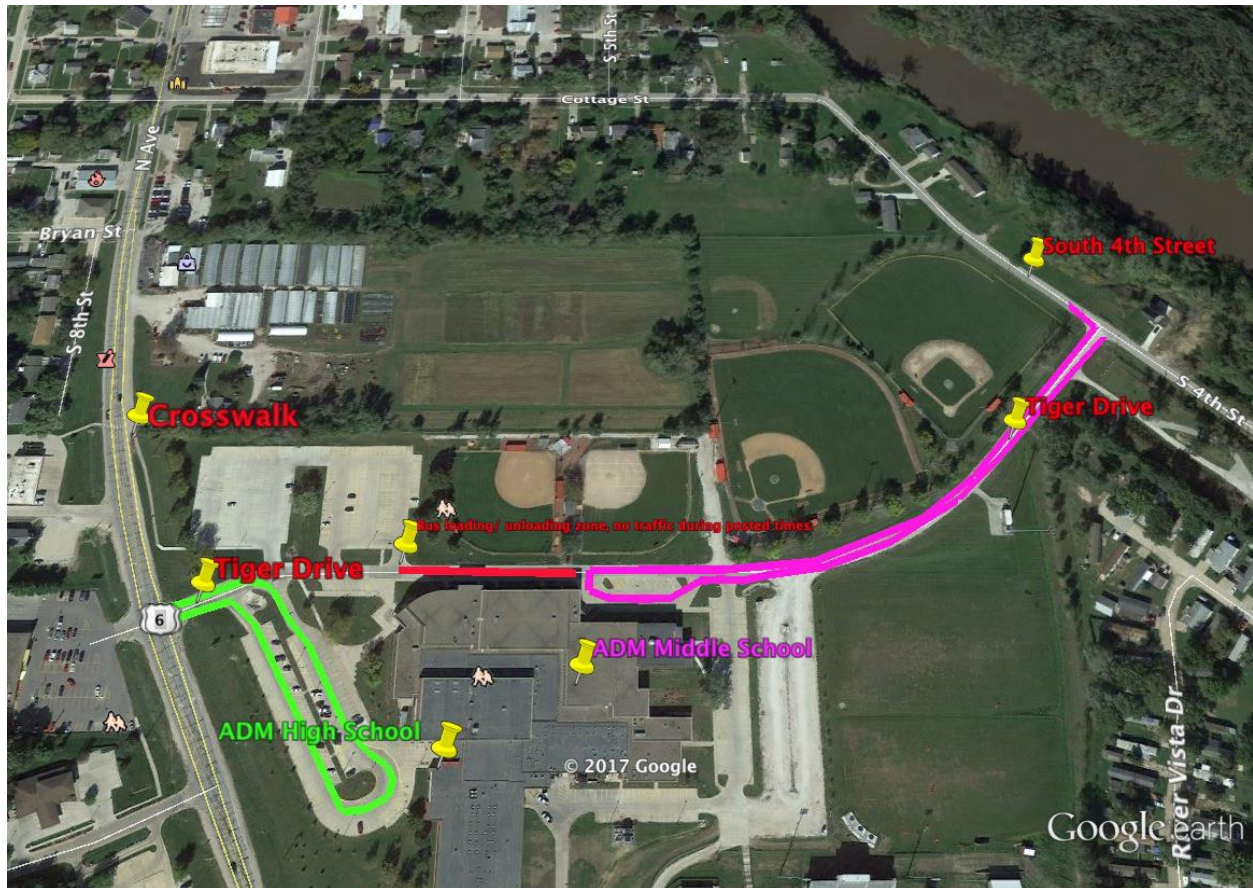
Parents should enter off of Grove and 16th to drop off students. Due to the current Main Street project, Main Street (Yellow highlighted area) is closed from 11th to 15th Street. Please note the blue and red routes as possible routes to travel to and from the Adel Elementary School. Officer Keller asks Parents who pick up and drop off students at the Adel Elementary to be aware of local residents needing to get out of their driveways while they are lined up in traffic during busy times.



Student pick up and drop off procedures

Middle School

Middle School parents should pick up and drop off students by entering on the east side of the school complex from South 4th Street to Tiger Drive and drop students off at the northeast entrance of the Middle School (pink route). The same procedure should be used at pick up time as well. The purpose of this is to lessen the amount of traffic on the high school side in the mornings and afternoons.



Student pick up and drop off procedures

High School

High School parents should pick up and drop off students by entering off of Nile Kinnick Drive onto Tiger drive and us the circle drive at the high school. After pick up of students, parents should exit at Nile Kinnick and Tiger Drive on the northwest corner of the property (green route).

